

Kajaria PLY & LAMINATES

CORPORATE OFFICE

Kajaria Plywood Pvt. Ltd.

J1/B1 (Extn.), Mohan Co - op Industrial Estate (Opp. Badarpur Thermal Power Station),
Mathura Road, New Delhi - 110 044

Phone: +91-11-2694 6409 | Email: info@kajariaply.com | www.kajariaply.com



Kajaria PLY & LAMINATES

YOUR FURNITURE
MADE BETTER WITH

LinerProtek

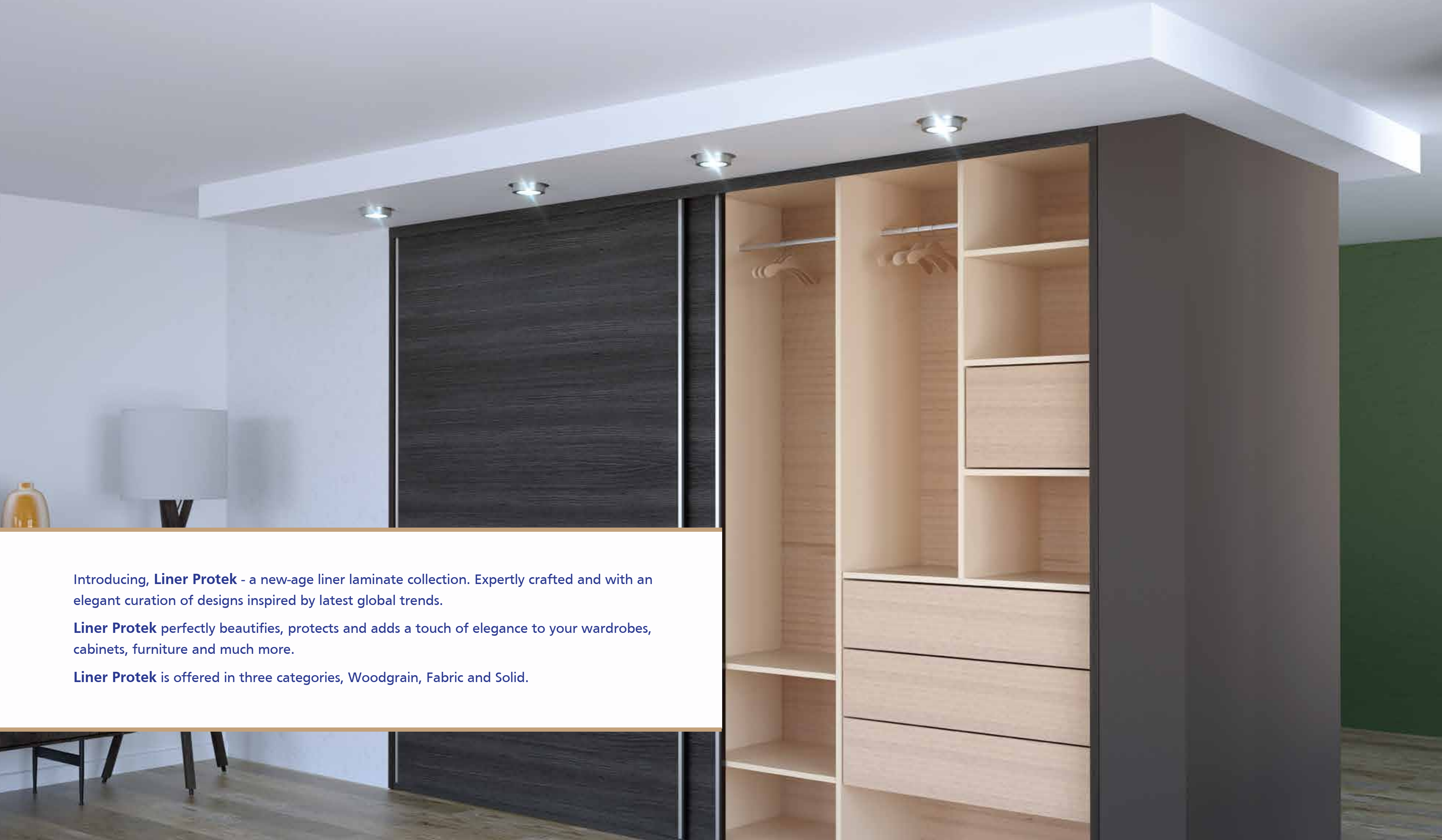
The elegant laminate liners for
your home furnishings





Driven by the inherent values of constant innovation & customer centricity, **Kajaria Laminates** offers an uniquely diverse bouquet of design possibilities that is bound to stimulate your design senses.

Kajaria Laminates Liner Protek has unique features & designs that will make your product range stand out while catering to your design requirements.



Introducing, **Liner Protek** - a new-age liner laminate collection. Expertly crafted and with an elegant curation of designs inspired by latest global trends.

Liner Protek perfectly beautifies, protects and adds a touch of elegance to your wardrobes, cabinets, furniture and much more.

Liner Protek is offered in three categories, Woodgrain, Fabric and Solid.

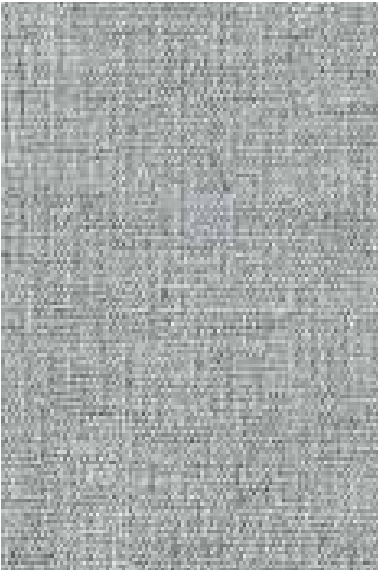
FABRIC



68213 Siren Light



68214 Khadi Fabric



68215 Grey Khadi Fabric



68228 Light Irish Fab



68229 Ivory Cushion



68230 White Jute



68216 Grey Fabric



68217 Rayon Pure



68219 Rayon Real



68231 Cream Woolen Fab



68232 Grey Woolen Fab



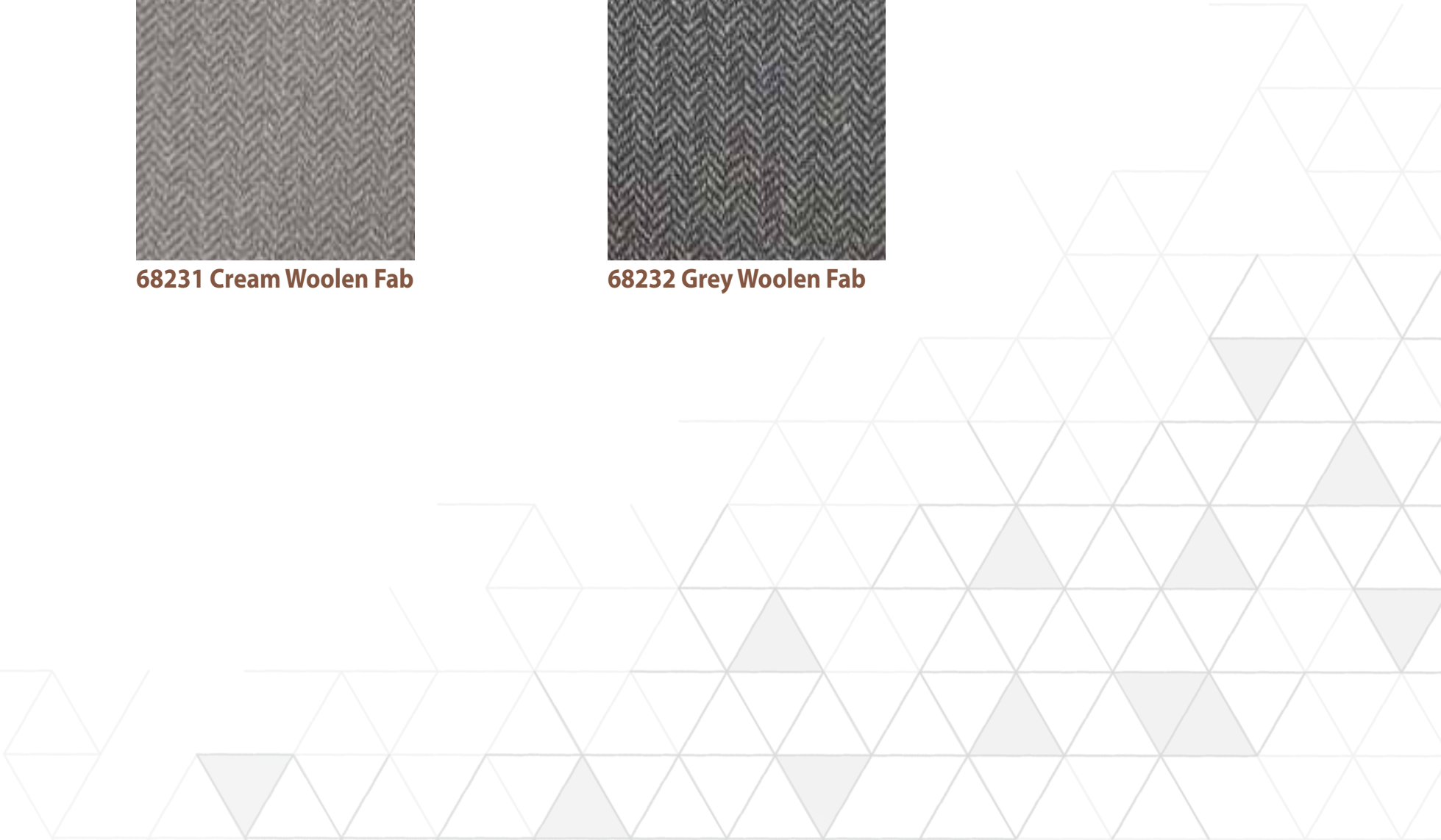
68220 Light Grey Linen



68226 Light Cambric



68227 Dark Cambric



WOODEN



68314 Light Walnut



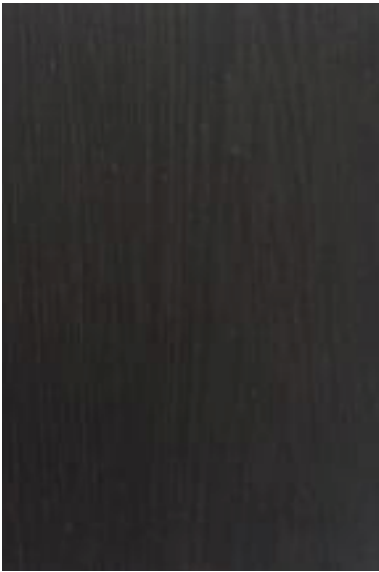
68328 Americano Walnut



68329 Alpino Wood Dark



68330 Brown Pine



68331 Flowery Wenge



68332 Wenge



68333 Wild Walnut

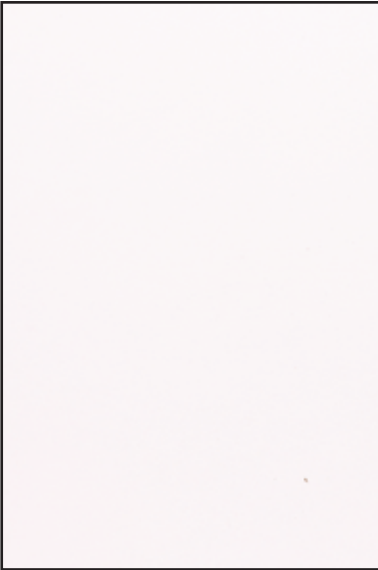


68334 Thai Walnut

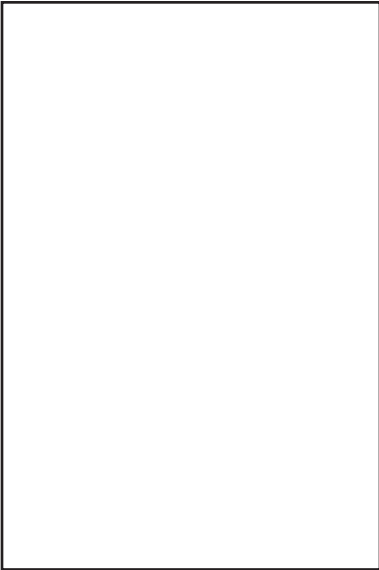


68335 Classic Walnut

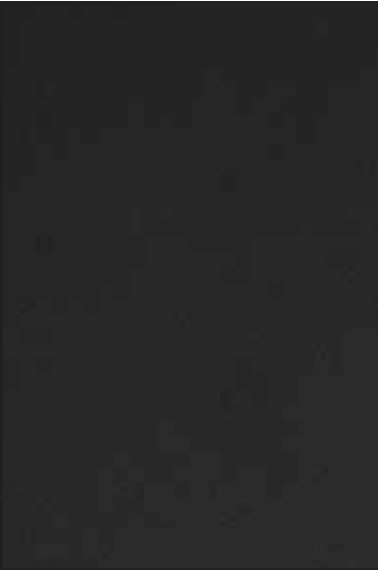
SOLID



68111 White



68112 Off White



68113 Grey



68115 Light Grey

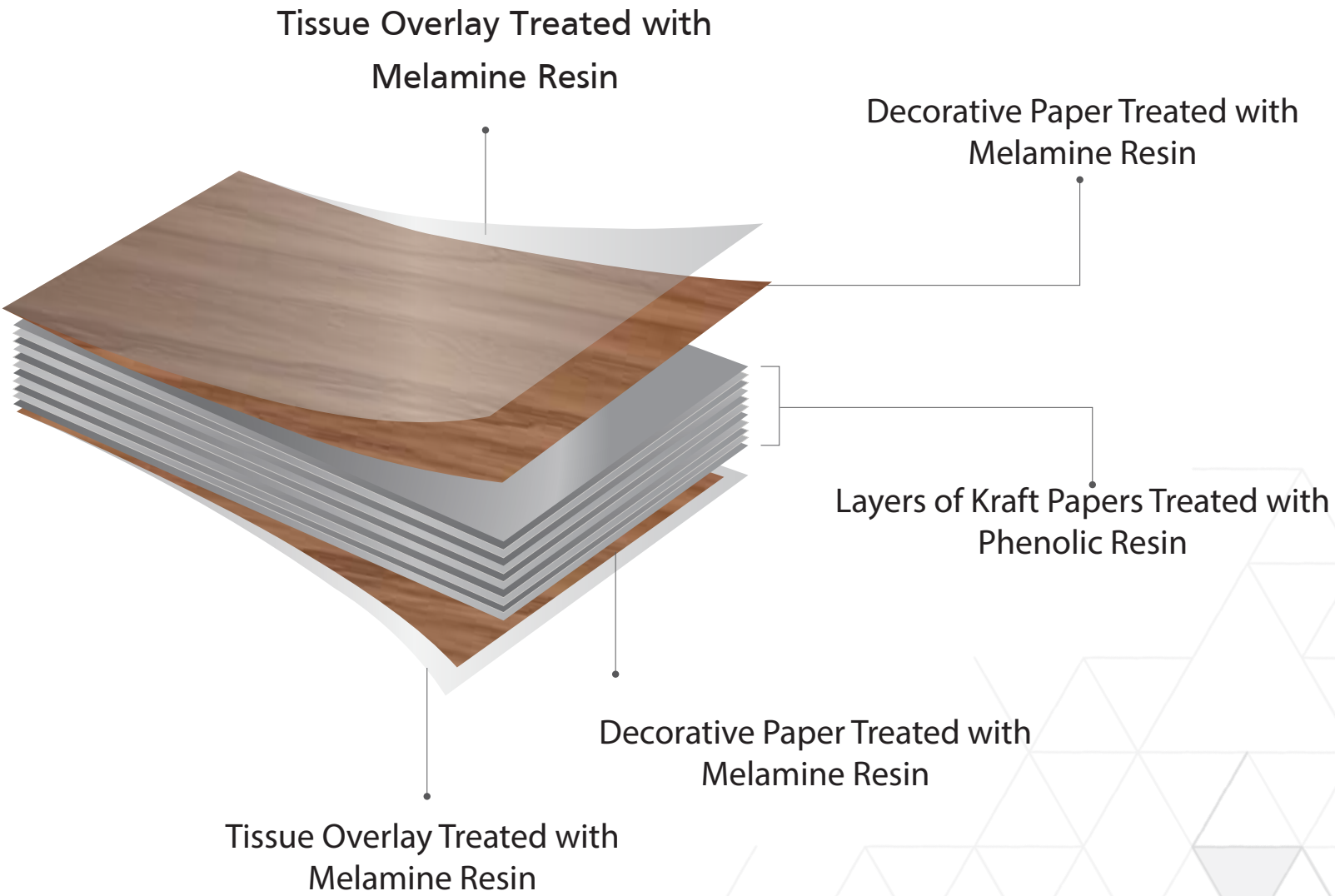


Technical Specifications
LINER PROTEK

S. NO.	PERFORMANCE CHARACTERISTICS	REQUIREMENT AS PER IS 2046: 1995	LINER PROTEK COMPLIANCE
	Type and Thickness	VLS, Thickness 0.70 mm	0.70 Nominal
1	Dimensional Properties		
	Length	(2440 mm) +10, -Nil	Conforms
	Width	(1220 mm) +10, -Nil	Conforms
	Thickness	0.70 ± 0.10 mm	0.65 to 0.72
	Squareness	1.5 mm/ M, max	Conforms
	Straightness of edges	1.5 mm/ M, max	
	Broken corner	One broken corner of ≤ 30 mm or two broken corners of ≤ 15 mm are allowed.	
2	Flatness	120 mm/M, max	Conforms
3	Resistance to surface wear, Revolutions (IP+FP)/2	50 (Min)	Conforms
4	Resistance to Immersion in boiling water		
	a) Mass increase, %	12.0 (Max)	Conforms
	b) Thickness increase, %	14.0 (Max)	Conforms
	c) Appearance	Not worse than Grade 3	Conforms
5	Dimensional stability at deviated temperature		
	Longitudinal	0.7 % (Max)	Conforms
	Transverse	1.15 % (Max)	Conforms
6	Resistance to impact by small diameter ball, Load	15 N (Min)	Conforms
7	Resistance to colour change In Xenon Arc light	Not worse than Grade 6	Conforms
8	Resistance to cracking	Not worse than Grade 4	Conforms
9	Resistance to scratching	1.5 (Min)	Conforms
10	Resistance to staining	Not worse than Grade 5	Conforms
11	Resistance to steam	Not worse than Grade 3	Conforms

- Note:
- The product is meant for Vertical Light duty applications only.
 - While the **Kajaria Laminates** products are manufactured to the highest standards, the nature of the application procedure is beyond our control. The values given above are to the best of knowledge but without liability/warranty, expressed or implied.
 - Application images and Product Scan shown in the E-catalogue are for illustration purpose only, please refer to the actual product/décor for colour and finish available.

Product Construction





MOISTURE
RESISTANT



IMPACT
RESISTANT



BORER/
TERMITE
RESISTANT



LOW VOC

- NOTE:
- All designs are available in Suede, Matt & Gloss finishes
 - Thicknesses available: 0.70 mm, 0.80 mm & 0.92 mm
 - Dimension available: 4 ft x 8 ft